



PHILIPS

Eagle Eye Platinum

RX digital IVUS catheters

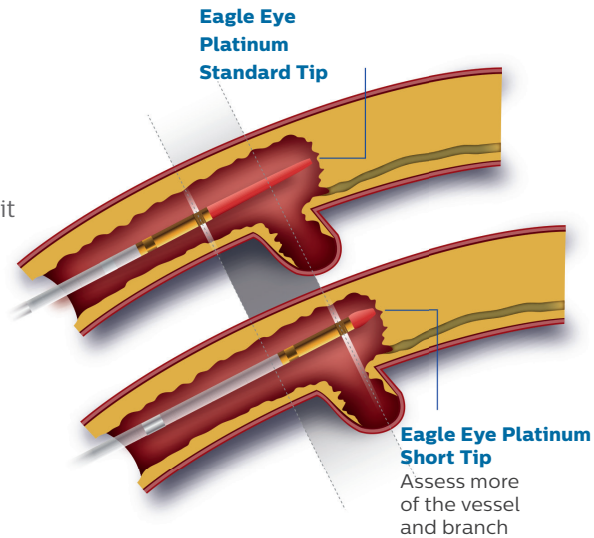
The trusted IVUS catheter

- now with a new glyDx hydrophilic coating

Eagle Eye Platinum – digital IVUS catheter with a phased-array transducer

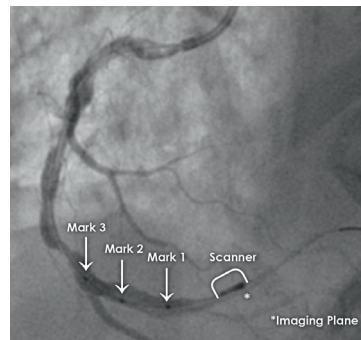
Unmatched versatility:

- Two tip options to suit vessel anatomy and lesion characteristics.
- Coronary and peripheral indications.
- Fits through all 5F by guide catheters¹ – supports brachial and femoral access and it is radial access appropriate.
- Three imaging modalities on a single catheter (Grayscale, VH IVUS and ChromaFlo).



Eagle Eye Platinum Standard Tip

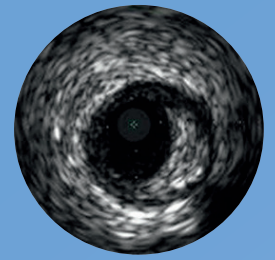
- Digital IVUS catheter, with a **phased-array transducer**.
- **Exceptional deliverability** – glyDx hydrophilic coating with low entry profile.
- Radiopaque markers – **quick and convenient** length estimation with radiopaque markers.
- Fast, plug-and-play simplicity – **ease of use**.
- **Efficient workflow** by permanent imaging, even during positioning.



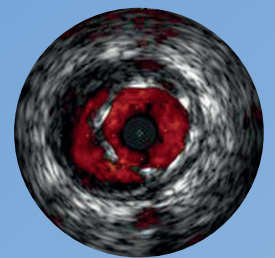
Eagle Eye Platinum Short Tip

In addition to the features of Eagle Eye Platinum Standard Tip (10mm), Eagle Eye Platinum Short Tip provides:

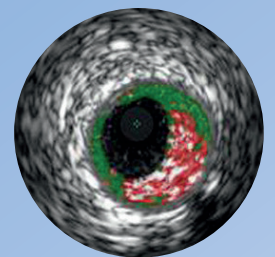
- **Shortest tip-to-transducer distance (2.5 mm)** which allows **closer visualization** to highly stenosed lesions, bifurcations and distal anatomy.
- **Improved deliverability²**.



Grayscale IVUS imaging



ChromaFlo imaging



VH IVUS imaging

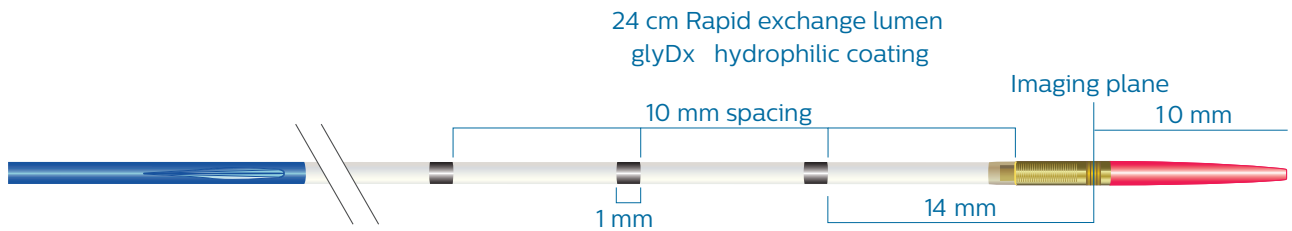
¹ Fits through guide catheters with inner diameters as low as 0.056". Data on file.

² Compared to the Eagle Eye gold catheter. Data on file.

Technical specifications

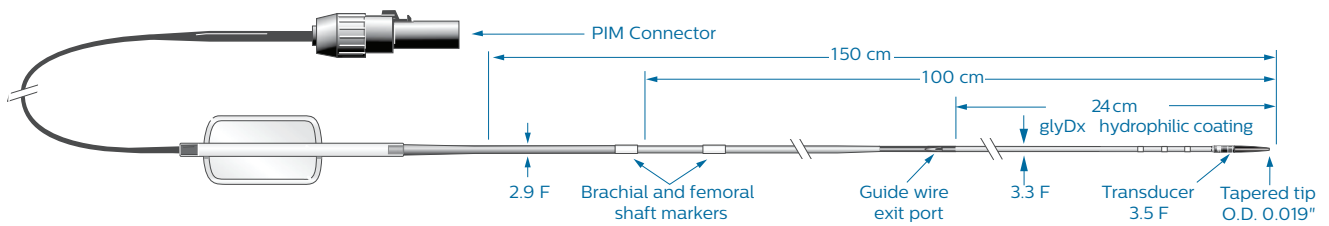
Eagle Eye Platinum Standard Tip

Distal tip and radiopaque marker detail



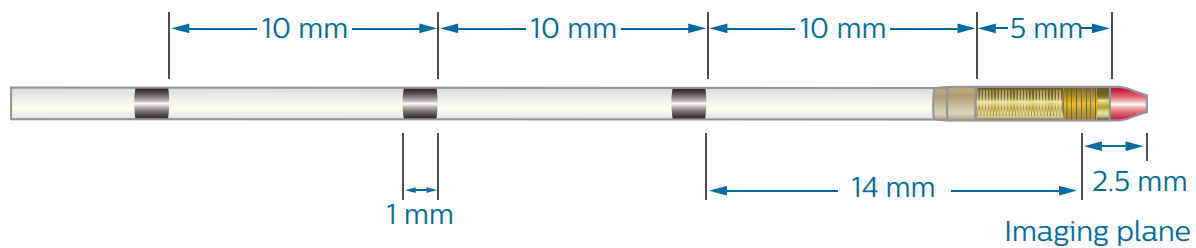
Eagle Eye Platinum Standard Tip

RX digital IVUS catheter



Eagle Eye Platinum Short Tip

Distal tip and radiopaque marker detail



Eagle Eye Platinum Short Tip

RX digital IVUS catheter

